

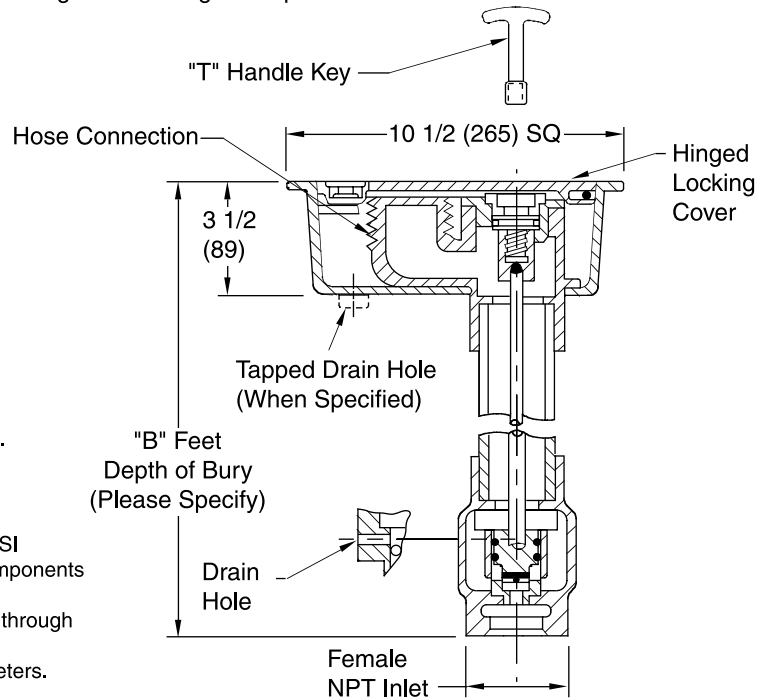
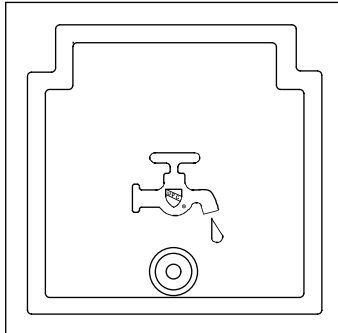


HYDRANTS

NON-FREEZE GROUND HYDRANT

1 1/4 (32), 1 1/2 (38) or 2" (51) CONNECTIONS

FUNCTION: A Hydrant with a hinged covered box, for positive protection against freezing when buried outside or in unheated areas and the closing valve is located below the frost line. When hydrant is shut off, water is drained from the casing through the drain hole in the valve housing. The locking cover prevents unauthorized use.



- NOTES:**
1. Recommended Box-out 9 1/2(240) x 9 1/2(240).
 2. All hydrants are manufactured with "NO-LEAD" brazing rings and USDA approved lubricants.
 3. The AB1953, California Lead Law, and NSF/ANSI Standard 61-2008 - Drinking Water System Components are not applicable to hydrants as they do not convey/dispense water for human consumption through drinking or cooking.
 4. Dimensions shown in parentheses are in millimeters.
 5. FOR IRRIGATION PURPOSES ONLY

B(Depth of Bury) = 02(610), 03(915), 04(1220), 05(1525), 06(1830), 07(2135) or 08(2438) Feet

| | | |
|--------------------------|---------------------------|------------------------------|
| <input type="checkbox"/> | Fig.M-3812... 1 1/4" (32) | } INLET AND HOSE CONNECTIONS |
| <input type="checkbox"/> | Fig.M-3813... 1 1/2" (38) | |
| <input type="checkbox"/> | Fig.M-3814... 2" (51) | |

REGULARLY FURNISHED:

Bronze Non-Freeze Ground Hydrant with "T" Handle Key and Cast Iron Hydrant Box Inlet and Hose Connection. Size Furnished as Indicated by Figure Number Selected.

VARIATIONS:

- 1/8" (3) NPT Drain Hole in Box -N
- 1/8" (3) NPT Drain Hole in Valve Housing -NV
- "Water" Cast on Cover -W

OPTIONAL MATERIALS:

- Nickel Bronze Box -NB
- Polished Bronze Box -PB
- Rough Bronze Box -RB

TECHNICAL DATA

Non-Freeze Ground Hydrants are supplied with a special valve housing which prevents freezing of hydrant during non-use periods. The valve housing must be installed below the frost line which prevails for the area of installation. The valve housing has a drain hole which drains the casing when the hydrant is shut off. In effect, there is no water in the casing during non-use periods. Since water from the drain hole is normally allowed to drain into the ground, the valve housing should be set in a bed of gravel. Water drained from the casing can then seep into the ground.

Some locations which require Non-Freeze Ground Hydrants cannot tolerate water draining from the drain hole. Examples are parking garages, plazas and roof decks used for recreational purposes. Often in these types of applications the valve housing will protrude into a finished area which is not subject to freezing temperatures. To eliminate the problem of water drainage in this type of installation, can supply a tapped drain hole in the hydrant box and a tapped drain hole in the valve housing. Through these tapped drain holes, water accumulation in the box and the water from the valve housing drain hole can be piped to a suitable drain.



Member of U.S. Green Building Council



Recyclable Product

WARNING: Cancer and Reproductive Harm - www.P65Warnings.ca.gov

MURDOCK MFG. • 15125 Proctor Avenue • City of Industry, CA 91746 USA
 Phone 800-453-7465 or 626-333-2543 • Fax 626-855-4860 • www.murdockmfg.com

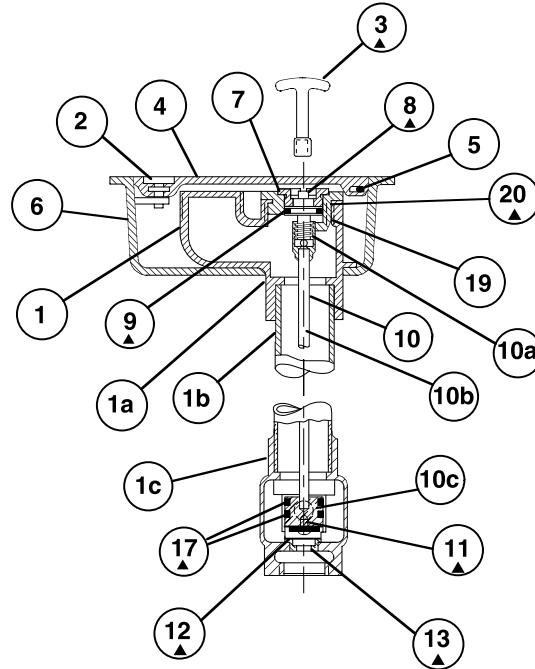
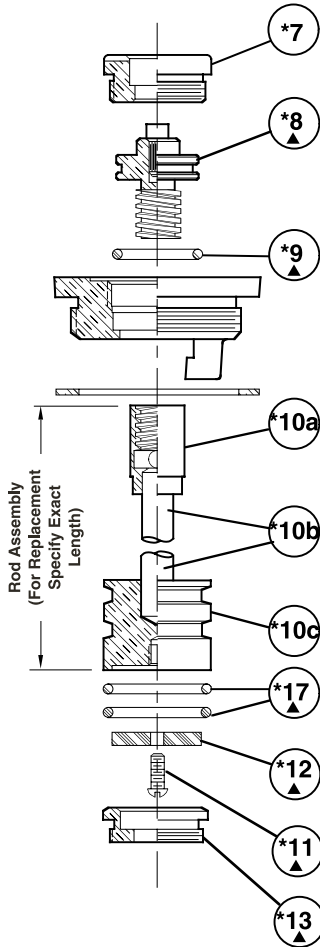
Member of MORRIS GROUP INTERNATIONAL



HYDRANTS

Hydrant Part List

NON-FREEZE
GROUND HYDRANT



▲THESE REPLACEMENT PARTS AVAILABLE IN HPRK - 5

MAINTENANCE INSTRUCTIONS

1. Shut off water supply.
2. Remove face nut.
3. Pull stem out for complete access to all working parts.
4. Check all working parts for replacement.
5. Replace complete stem assembly and face nut.

*These parts are accessible from face of hydrant by removing facenut.

REPLACEMENT PARTS LIST - SPECIFY FIGURE NO. WHEN ORDERING

| No. | DESCRIPTION | No. | DESCRIPTION |
|-----|------------------------------|-----|--------------------------|
| 1 | Head/Casing Assembly | 9 | Operating Screw "O" Ring |
| 1a | Head | 10 | Operating Rod Assembly |
| 1b | Casing | 10a | Coupling |
| 1c | Valve Housing | 10b | Rod |
| 2 | Locking Device | 10c | Plunger |
| 3 | Key | 11 | Washer Screw (No. 10-24) |
| 4 | Cover | 12 | Washer (Neoprene) |
| 5 | Hydrant Cover Hinge Pins (2) | 13 | Removable Seat |
| 6 | Box | 17 | Plunger "O" Ring |
| 7 | Face Nut | 19 | Face Nut Seat |
| 8 | Operating Screw | 20 | Face Nut Seat Gasket |

Murdock Mfg.™ warrants that its products are free from defects in material or workmanship under normal use and service for a period of one year from date of shipment. Murdock's liability under this warranty shall be discharged solely by replacement or repair of defective material, provided Murdock™ is notified in writing within one year from date of shipment, F.O.B. Industry, California.

SELECTION SUMMARY & APPROVAL FOR MANUFACTURING

Model Number & Options _____ Quantity _____

Company _____

Contact _____ Title _____

Signature (Approval for Manufacturing) _____ Date _____

All dimensions are subject to manufactures tolerance of plus or minus 1/2" nominal and subject to change without notice. Murdock assumes no responsibility for use of void or superseded data. Dimensions may change with the addition of optional accessories. Murdock Mfg.™, Member of Morris Group International™. Please visit www.murdockmfg.com for most current specifications.